

BASEBOARDS



PRODUCT DIMENSION 1/2" x 4" - 8'; 14'



MDF #222 (B2) BASEBOARD



PRODUCT DIMENSION 1/2" x 4" - 8'; 14'



MDF #223 (B3) BASEBOARD



PRODUCT DIMENSION 3/8" x 2 1/8" - 14'



FJP #356 BASEBOARD



PRODUCT DIMENSION 3/8" x 2 1/8" - 14'



MDF #356 BASEBOARD



PRODUCT DIMENSION 1 1/16" x 3 1/4" - 14'



MDF #311B BASEBOARD



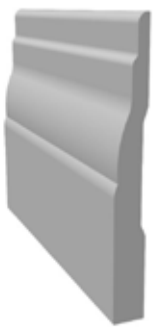
PRODUCT DIMENSION 1 1/16" x 4 1/4" - 14'



MDF #311C BASEBOARD



PRODUCT DIMENSION 3/8" x 3 1/4" - 14'



FJP #3140 BASEBOARD



PRODUCT DIMENSION 3/8" x 3 1/4" - 14'



MDF #3140 BASEBOARD



PRODUCT DIMENSION 1/2" x 3 1/2", 4", 5", 6" - 8'; 14'



MDF FLATSTOCK EE/SE



CASINGS I

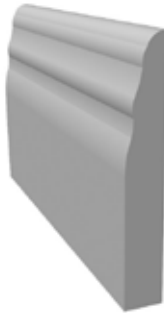
PRODUCT DIMENSION 5/8" x 5/8" - 8'



FJP #126 QUARTER ROUND



PRODUCT DIMENSION 3/16" x 1 3/16" - 10'



FJP #161 CASING



PRODUCT DIMENSION 1/2" x 1 3/16" - 8', 10', 14'



FJP #225 LIP CASING



PRODUCT DIMENSION 7/16" x 1 5/16" - 8', 14'



FJP #226 CASING



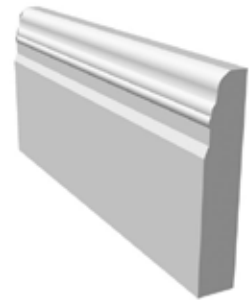
PRODUCT DIMENSION 3/8" x 1 5/16" - 8', 14'



MDF #226 CASING



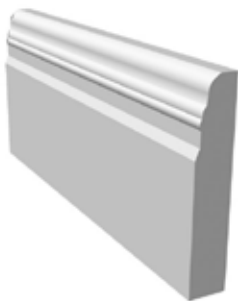
PRODUCT DIMENSION 1/4" x 1 5/16" - 10'



FJP #261 CASING



PRODUCT DIMENSION 1/4" x 1 5/16" - 8'



MDF #261 CASING



PRODUCT DIMENSION 11/16" x 2 1/4" - 14'



MDF #311A CASING



PRODUCT DIMENSION 3/8" x 2 1/8" - 14'



MDF #356 CASING



CASINGS II



PRODUCT DIMENSION 3/8" x 2 1/8" - 14'



FJP #356 CASING



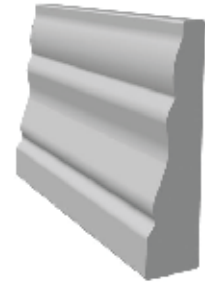
PRODUCT DIMENSION 3/8" x 2 3/16" - 14'



MDF #421 CASING



PRODUCT DIMENSION 5/16" x 1 1/4" - 8', 10', 14'



FJP #995 CASING



PRODUCT DIMENSION 3/8" x 1 1/2" - 14'



MDF #3000 CASING



PRODUCT DIMENSION 3/8" x 1 1/2" - 14'



FJP #3000 CASING



PRODUCT DIMENSION 3/8" x 2 1/4" - 14'



MDF #3002 CASING



PRODUCT DIMENSION 3/8" x 2 1/4" - 14'



FJP #3002 CASING



PRODUCT DIMENSION 1/2" x 1 9/16" - 8'



FJP #3729 CASING



PRODUCT DIMENSION 7/16" x 3/4" - 7'



FJP #7071 SHOE MOULD



CASINGS III

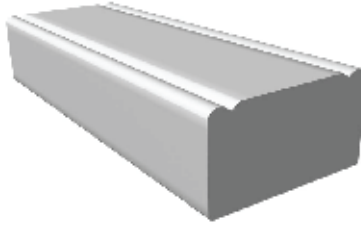
PRODUCT DIMENSION 1 1/16" x 3", 3 1/2" - 8', 14'



MDF FLATSTOCK EE/EE



PRODUCT DIMENSION 1 1/4" x 2 1/4" - 18'



BRICKMOULD



PRODUCT DIMENSION 3/8" x 2 3/8" - 14'



MDF #996 CHAIR RAIL



CROWN MOULDINGS

PRODUCT DIMENSION 3/8" x 1 5/8" - 10'



FJP #169 CEILING COVE



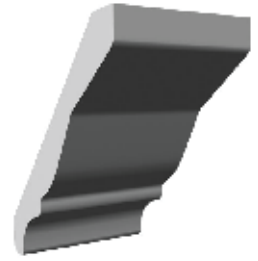
PRODUCT DIMENSION 3/8" x 1 5/8" - 8', 14'



MDF #169 CEILING COVE



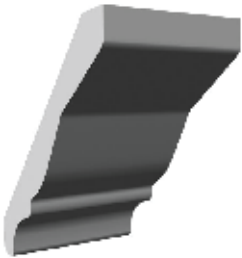
PRODUCT DIMENSION 5/16" x 2 1/2" - 10'



FJP #451 CROWN MOULD



PRODUCT DIMENSION 3/8" x 2 1/2" - 14'



MDF #451 CROWN MOULD



PRODUCT DIMENSION 11/16" x 2 5/16" - 10'



FJP #510 CABINET CROWN



PRODUCT DIMENSION 11/16" x 2 5/16" - 8'



MDF #510 CABINET CROWN



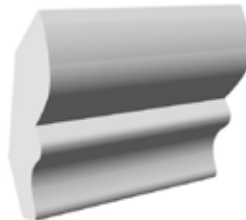
PRODUCT DIMENSION 7/8" x 2" - 10'



FJP #511 CABINET CROWN



PRODUCT DIMENSION 5/8" 1 3/4" - 10', 14'



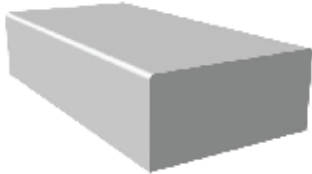
FJP #3994 CROWN MOULD



JAMB & BOX STOP



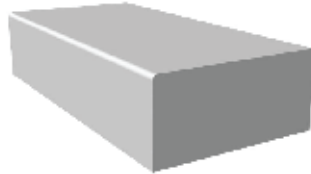
PRODUCT DIMENSION 1 1/16" x 1 1/2" - 7'



FJP 1" X 2" JAMB



PRODUCT DIMENSION 1 1/16" x 1 1/2" - 7'



MDF 1" X 2" JAMB



PRODUCT DIMENSION 1 1/16" x 4 9/16" - 7'



FJP 1" X 5" JAMB



PRODUCT DIMENSION 1 1/16" x 4 9/16" - 7'



MDF 1" X 5" JAMB



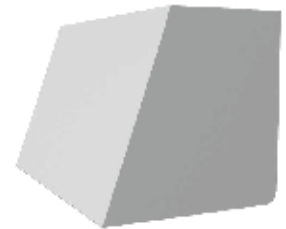
PRODUCT DIMENSION 3/4" x 1/2" - 8', 10', 14'



BOX STOP 3/4" X 1/2"



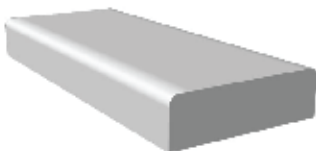
PRODUCT DIMENSION 3/4" x 3/4" - 8', 10', 14'



BOX STOP 3/4" X 3/4"



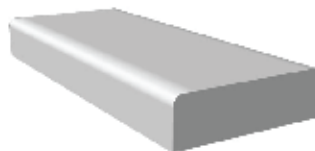
PRODUCT DIMENSION 3/8" x 1 1/4" - 7'



FJP #3422 DOOR STOP



PRODUCT DIMENSION 3/8" x 1 1/4" - 7'



MDF #3422 DOOR STOP



VIPTRIM PANEL ACCESSORIES I

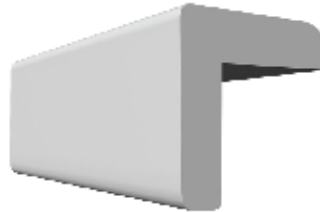
PRODUCT DIMENSION 7/16" x 1 1/2" - 8', 10', 12', 13'6"



FJP #115 BATTEN



PRODUCT DIMENSION 1" x 1 1/4" - 8', 10'



FJP #208 OUTSIDE CORNER



PRODUCT DIMENSION 7/16" x 1 1/2" - 8', 10'



FJP #215 BATTEN



PRODUCT DIMENSION 5/32" x 1 1/16" - 8', 10', 14'



FJP #900 BATTEN



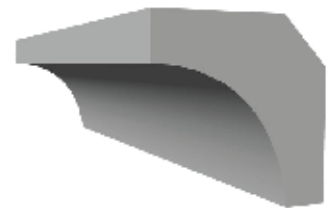
PRODUCT DIMENSION 1/8" x 7/8" - 8', 9', 10'



FJP #901 BATTEN



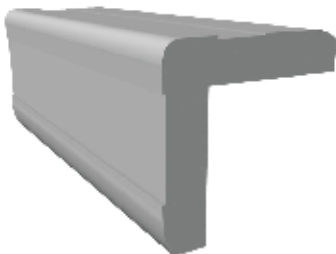
PRODUCT DIMENSION 3/4" x 3/4" - 8', 10'



FJP INSIDE CORNER



PRODUCT DIMENSION 3/4" x 3/4" - 8', 10'



FJP OUTSIDE CORNER



PRODUCT DIMENSION 3 mm x 2" - 8', 10'



MDF 3 WAY VARIABLE CORNER 2"



PRODUCT DIMENSION 3 mm x 3" - 8', 10'



MDF 3 WAY VARIABLE CORNER 3"



VIPTRIM PANEL ACCESSORIES II

PRODUCT DIMENSION 3/8" x 5" - 8'



FJP BATZILLA



PRODUCT DIMENSION 3/8" x 5" - 8'



MDF BATZILLA

